



Harmony XVS sirens and electronic alarms

Signaling units

www.se.com

Authorized Partner



Life Is On





Harmony

Discover [Harmony](#)

Advanced operator interface and industrial relays

Harmony operator interface and industrial relays enhance operational efficiency and equipment availability across industrial and building applications. Harmony includes intelligent connected products and edge terminals that visualize, gather and process data, enabling informed operator decisions

Explore our offer

- [Harmony Push Buttons and Switches](#)
- [Harmony HMI Operator Terminals, IPC and EdgeBox](#)
- [Harmony Signaling Devices](#)
- [Harmony Electrical Relays](#)
- [Harmony Safety](#)

Life Is On

Schneider
Electric

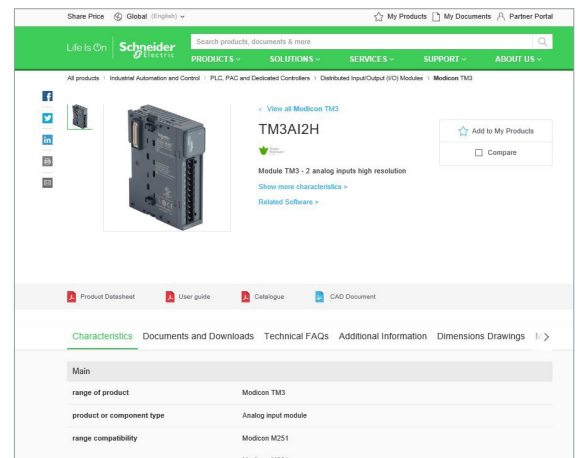
Quick access to product information

Get technical information about your product

References

Modicon TM3
I/O expansion modules for Modicon controllers
Analog I/O modules

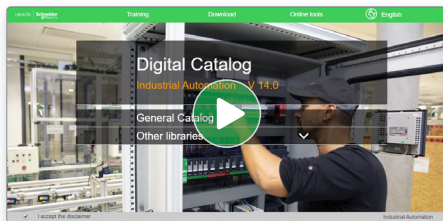
Number and type of channels	Input range	Output range	Resolution	Input format (internal)	Reference	Weight (kg)
2 voltage/current inputs	-15...+15 VDC 0...20 mA r.t. 20 mA	16.000 or 12.000 r.t. sign	16.000 or 12.000 r.t. sign	16-bit 12-bit	TM3AI2H TM3AI2G	0.110 0.200
4 voltage/current inputs	-15...+15 VDC 0...20 mA r.t. 20 mA	16.000 or 12.000 r.t. sign	16.000 or 12.000 r.t. sign	16-bit 12-bit	TM3AI4 TM3AI4G	0.110 0.200
4 voltage/current or temperature inputs (T)	-15...+15 VDC 0...20 mA r.t. 20 mA	16.000 or 12.000 r.t. sign	16.000 or 12.000 r.t. sign	16-bit 12-bit	TM3AI4T TM3AI4TG	0.110 0.200
4 differential temperature inputs (T)	-15...+15 VDC 0...20 mA r.t. 20 mA	16.000 or 12.000 r.t. sign	16.000 or 12.000 r.t. sign	16-bit 12-bit	TM3AI4D TM3AI4DG	0.110 0.200
8 self-diagnosing	-15...+15 VDC	16.000 or 12.000 r.t. sign	16.000 or 12.000 r.t. sign	16-bit 12-bit	TM3AI8 TM3AI8G	0.110 0.200



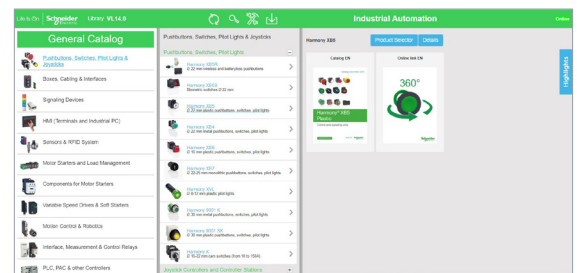
Each commercial reference presented in a catalog contains a hyperlink. Click on it to obtain the technical information of the product:

- Characteristics, Dimensions and drawings, Mounting and clearance, Connections and schemas, Performance curves
- Product image, Instruction sheet, User guide, Product certifications, End of life manual

Find your catalog



- > With just 3 clicks, you can access the Industrial Automation and Control catalogs, in both English and French
- > Consult digital automation catalogs at [Digi-Cat Online](#)

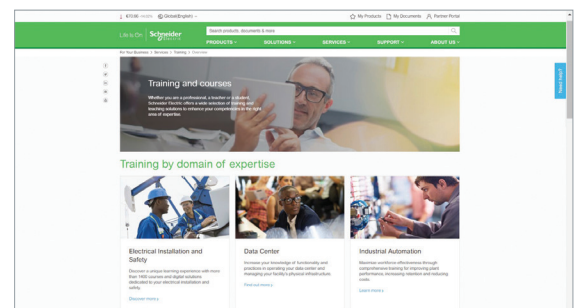


- Up-to-date catalogs
- Embedded product selectors, 360° pictures
- Optimized search by commercial references

Select your training



- > Find the right [Training](#) for your needs on our Global website
- > Locate the training center with the selector tool, using this [link](#)



General contents

Harmony XVS sirens and electronic alarms

■ General presentation.....	page 35105/2
<i>Selection guide</i>	<i>page 0348Q/2</i>
■ Presentation	
□ Sound units Harmony type XVS.....	page 35099/2
□ Software configuration.....	page 35099/2
■ References	
□ Editable voice alarms.....	page 35099/3
□ Sirens and electronic alarms.....	page 35099/3
■ Product reference index.....	page R1051/2

Signaling units

Sound units

Harmony type XVS

Multi sound sirens and alarms

Harmony® XVS editable sound offer



The Harmony XVS range of multi sound sirens, multi sound alarms, and editable alarms are commonly used audible signaling products for a wide range of applications. These audible units come with a combination of innovative features, high performance and simplicity.

- > Available in various sound levels to suit for different industrial applications (106dB, 105dB, 90dB, 96dB, 97dB, and 89dB at 1m/3.28 ft.)
- > Used for long distance indication of the operating status or sequences of a machine or installation



XVSV7●●●



XVSV9●●●



XVS72



XVS96



XVS14



XVS10

Editable sound offer

Customized voice message

- > A free of charge configuration software allows to customize the audible signals via SD card
- > Improved efficiency to set up by easily allowing to edit the voice message and change the modes on site
- > Adjustable volume up to 97dB (for DIN 96) or 89dB (for DIN 72)

Playlist Builder



Configuration of audible signal via Playlist Builder software



+ Compact audible units

Editable sound offer (continued)

Easy sound configuration

- > High level of alerting with customized voice message
- > Different types of audible sounds in single product makes it easy to use, simple to select and decreases the stock
- > Wide range of configuration with 6 input channels and up to 63 output tones



Easy sound kit selection and volume adjustment with use of simple tool



Compact and flexible

- > Easy installation with panel and wall mounting
- > Body thickness reduced to 24.9mm/0.98 in. (DIN 72) and 50.1mm/1.97 in. (DIN96)
- > With binary and bit input options, 8 work operation modes are available for various operations



Panel thickness reduced by 20% making the audible units compact



Robustness

- > IP 65 degree of protection (for panel mounting)
- > cUL, CE and UKCA certified and RoHS compliant



Designed in conformity with requirements of the European RoHS Directive 2011/65/EU



➔ Industrial applications

Ideally suited for factory applications: AGV, packaging machine and non factory applications: packing, public transportation.



Factory applications



Packing



Public areas



Public transportation

+ Editable voice message

Harmony type XV **Monolithic tower lights**




Type of products	Pre-assembled and pre-cabled USB tower lights	Pre-assembled/pre-cabled tower lights Variable composition tower lights for customer assembly of up to 4 units
Diameter	Ø 60 mm/2.362 in.	Ø 60 mm/2.362 in.
Degree of protection conforming to IEC 60529	IP 54	IP 53 and IP 42 (base mounting) IP 23 (direct aluminium tube mounting, aluminium tube mounting and "L" bracket) IP 53 and IP 42 (aluminium tube mounting and fixing plate) IP 40 (aluminium tube mounting and foldable bracket)
Type of signalling	Steady Flashing High flashing Sound	Yes Yes (* only Red)
Light sources	Incandescent bulb LED bulb Integral LED "Flash" discharge tube Halogen bulb	With buzzer (volume control and alarm type can be set with HMI) With buzzer
Colors of illuminated units	Multi-color LEDs (many possible combinations can be set with HMI) <input type="checkbox"/> Red <input type="checkbox"/> Orange <input type="checkbox"/> Green <input type="checkbox"/> Blue	<input type="checkbox"/> Red <input type="checkbox"/> Green <input type="checkbox"/> Amber <input type="checkbox"/> Blue
Connection	USB power cable: - 300 mm/11.81 in. for tube mounting - 400 mm/15.75 in. for direct mounting	Flying leads, length 500 to 560 mm/19.68 to 22.05 in. for tube mounting according to model. Length 900 mm/35.43 in. for base mounting.
Support panel drilling or cut-out	Mounting on support tube with fixing plate: 4 x Ø 6 mm/0.236 in. Direct mounting on horizontal support: 3 x Ø 5 mm/0.197 in.	Base mounting: 3 x Ø 5 mm/0.197 in. Direct aluminium tube mounting: Ø20/0.787 in. Aluminium tube mounting and "L" bracket: 2 x Ø9/0.354 in. Aluminium tube mounting and fixing plate: 4 x Ø6/0.236 in. Aluminium tube mounting and foldable bracket: 4 x Ø6/0.236 in.
Type references	XVGU	XVG

Monolithic tower lights



Type of products	Pre-assembled and pre-cabled tower lights	Pre-assembled and pre-cabled tower lights	Pre-assembled and pre-cabled tower lights
Diameter	Ø 40 mm/1.575 in.	Ø 60 mm/2.36 in.	Ø 100 mm/3.937 in.
Degree of protection conforming to IEC 60529	IP 54 (flat surface installation) IP 23 (vertical surface installation)	IP 54 (flat surface installation) IP 23 (vertical surface installation)	IP 54 (flat surface installation)
Type of signalling	Yes Yes	Yes Yes	Yes Yes
Light sources	With buzzer	With buzzer	With siren or buzzer
Colors of illuminated units	<input type="checkbox"/> Red <input type="checkbox"/> Orange <input type="checkbox"/> Green <input type="checkbox"/> Blue <input type="checkbox"/> Clear	<input type="checkbox"/> Red <input type="checkbox"/> Orange <input type="checkbox"/> Green <input type="checkbox"/> Blue <input type="checkbox"/> Clear	<input type="checkbox"/> Red <input type="checkbox"/> Orange <input type="checkbox"/> Green <input type="checkbox"/> Blue <input type="checkbox"/> Clear
Connection	Flying leads, length 450 mm/17.71 in. to 900 mm/35.43 in. according to model	Flying leads, length 450 mm/17.71 in. to 850 mm/33.46 in. according to model	Flying leads, length 500 mm/19.68 in.
Support panel drilling or cut-out	Mounting on support tube with bracket: 2 x Ø 9 mm/0.354 in. Direct mounting on horizontal support: 3 x Ø 5 mm/0.20 in. Other mounting possibilities with accessories	Mounting on support tube with bracket: 2 x Ø 11 mm/0.43 in. Direct mounting on horizontal support: 3 x Ø 5 mm/0.197 in. Other mounting possibilities with accessories	Direct mounting on horizontal support: - 3 x Ø 6 mm/0.236 in. (without siren) - 3 x Ø 7 mm/0.276 in. (with siren) Other mounting possibilities with accessories
Type references	XVC4	XVC6	XVC1

Harmony type XV		Modular tower lights	
			
Type of products	Illuminated beacons Variable composition tower lights for customer assembly of up to 5 units	Tower lights for customer assembly of up to 5 units.	
Diameter	Ø 70 mm/2.756 in.	Ø 60 mm/2.362 in.	
Degree of protection conforming to IEC 60529	IP 65 (mounted on fixing base XVBZ0●) IP 66 (mounted on base unit)	IP 65 for illuminated units IP 54 for audible units IP 55 for flexible mounting unit	
Type of signalling	Steady Flashing High flashing "Flash" Sound	Yes Yes – Yes Yes	Yes Yes Yes – Yes (buzzer or editable voice)
Light sources	Incandescent bulb LED bulb Integral LED "Flash" discharge tube Halogen bulb	Yes "PROTECTED LED" "PROTECTED LED" Yes –	– – Yes – –
Colors of illuminated units	<input type="checkbox"/> Green <input type="checkbox"/> Red <input type="checkbox"/> Orange <input type="checkbox"/> Blue <input type="checkbox"/> Clear <input type="checkbox"/> Yellow	<input type="checkbox"/> Green <input type="checkbox"/> Red <input type="checkbox"/> Orange <input type="checkbox"/> Blue <input type="checkbox"/> White <input type="checkbox"/> Yellow	
Connection	Screw clamp terminals	Spring cage connection terminals	
Support panel drilling or cut-out	Mounting on support tube: 4 x Ø 5.5 mm/0.217 in. or M5 Vertical mounting: 3 x Ø 5 mm/0.197 in. or M5 Direct mounting: 2 x Ø 4.5 mm/0.177 in. or M4	Mounting on support tube and adjustable support tube: 4 x Ø 6 mm/0.236 in. Flexible wall mounting: 3 x Ø 5 mm/0.197 in. Direct mounting: 2 x Ø 5 mm/0.197 in. 3 x Ø 5 mm/0.197 in. 4 x Ø 5 mm/0.197 in. Mounting on bracket: 2 x Ø 9 mm/0.354 in.	
Type references	XVBL, XVBC	XVU	

Modular tower lights	Rotating beacons	Beacons	Sound solutions
			
Pre-assembled/pre-cabled tower lights Variable composition tower lights for customer assembly of up to 5 units	Pre-cabled rotating beacons Pre-cabled motor-less rotating/flashing beacons	Complete miniature beacons	Sirens and electronic alarms
Ø 45 mm/1.772 in.	Ø 84 mm/3.31 in. to Ø 130 mm/5.12 in.	Ø 45 mm/1.772 in.	–
IP 54 in vertical position (XVM with plastic fixing plate) IP 42 in horizontal position (XVM with metal bracket) IP 40 in other positions (all types of XVM tower lights)	Ø 84 mm/3.31 in. and Ø 106 mm/4.17 in.: IP 23 (IP 65 with accessory) Ø 120 mm/4.72 in.: IP 23 Ø 130 mm/5.12 in.: IP 66 and IP 67 (depending on voltage) Ø 100 mm/3.94 in.: IP 65 for upright position, IP 23 for sideways and inverted position	IP 40	IP 53 (sirens) IP 54 (electronic alarms) IP 65 (editable voice)
Yes	Yes	Yes	–
Yes	–	–	–
–	–	–	–
Yes	–	Yes	–
Yes	Yes	–	Yes (editable voice)
Yes	–	Yes	–
Yes	"Super Bright"	–	–
–	–	–	–
Yes	–	Yes	–
–	Yes	–	–
<input type="checkbox"/> Red <input type="checkbox"/> Green <input type="checkbox"/> Orange <input type="checkbox"/> Blue <input type="checkbox"/> Clear	<input type="checkbox"/> Red <input type="checkbox"/> Orange <input type="checkbox"/> Green <input type="checkbox"/> Blue	<input type="checkbox"/> Green <input type="checkbox"/> Red <input type="checkbox"/> Orange <input type="checkbox"/> Blue <input type="checkbox"/> Clear <input type="checkbox"/> Yellow	–
Flying leads, length 300 mm/11.81 in. or screw terminals	Flying leads, length 400 mm/15.75 in. (except XVR08: 500 mm/19.68 in.)	Screw clamp terminals	Screw clamp terminals (except XVS14: flying leads, length 500 mm/19.68 in.)
Mounting on bracket: 2 x Ø 9 mm /0.354 in. Mounting on support tube: 4 x Ø 5.5 mm/0.217 in. or M5	Depending on model: - XVR08 (Ø 84 mm/3.31 in.): 3 x Ø 5 mm/0.197 in. - XVR10 (Ø 106 mm/4.17 in.): 3 x Ø 5 mm/0.197 in. - XVR12 (Ø 120 mm/4.72 in.): 3 x Ø 6 mm/0.236 in. - XVR13 (Ø 130 mm/5.12 in.): 3 x Ø 9 mm/0.354 in. - XVR13●●●L (Ø 130 mm/5.12 in.): 3 x Ø 7 mm/0.276 in. - XVR3 (Ø 100 mm/3.94 in.): 3 x Ø 6 mm/0.236 in.	3 x Ø 3.3 mm/0.130 in. or M3	3 x Ø 6.5 mm/0.256 in.
XVM	XVR	XVDLS	XVS

Signaling Units

Sound units

Harmony type XVS

Multi sound sirens and alarms



XVSV7



XVSV9



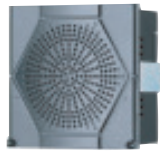
XVS10



XVS14



XVS72



XVS96

Presentation

The multi sound sirens and alarms in the Harmony XVS range are audible signaling units used for long distance indication of the operating status or sequences of a machine or installation.

XVSV editable voice alarms

The XVSV editable voice alarms are compact audible signaling units. Availability in dark Grey and White color makes them ideal for use in public areas and for factory applications. These units have wide range of configuration which allows selection of 6 voice channels, playing 63 messages with playback time of 256 sec (64 kb/s), to be mounted on wall or panels (protection: up to IP 65).

XVS10, XVS14, XVS72, XVS96 multi sound sirens and alarms

This range involves several types of ready to use products mainly used on conveyor belts, automated industrial trucks and on the doors of electrical control panels:

- sirens with 2 tones, with very compact size, type XVS10,
- multisound sirens (43 tones), pre-cabled, 8 channels, type XVS14,
- electronic alarms, white or black color, 16 tones, 4 channels, type XVS72 and XVS96, to be mounted on panels (protection: IP 54).

The sound, with continuous or intermittent tone:

- guarantees a sound level of 106 dB at 1 m for XVS10,
- can be adjusted from 0 to 105 dB at 1 m for XVS14,
- can be adjusted from 0 to 90 dB at 1 m for XVS72,
- can be adjusted from 0 to 96 dB at 1 m for XVS96.

Environment

The XVS sirens and electronic alarms offer following characteristics:

- Degrees of protection:
 - IP 65 for editable voice alarms type XVSV
 - IP 53 for multi sound sirens type XVS10 and XVS14
 - IP 54 for multi sound alarms type XVS72 and XVS96
- These products meet the requirements of the following standards:
 - EN/IEC 61000-6-2 and EN/IEC 61000-6-3 for voltages 120 V and 230 V A.C. (XVS14BMW and XVS72),
 - EN/IEC 60947-1 and EN/IEC 60947-5-1 for voltages 12 V and 24 V A.C. (XVS10, XVS14GMW, XVS14MMW and XVS96).
- Product certifications:
 - XVS10, XVS14, XVS72, and XVS96 are CE, UKCA, UL and CSA certified
 - XVSV editable voice alarms are CE, UKCA and cUL certified

Connection

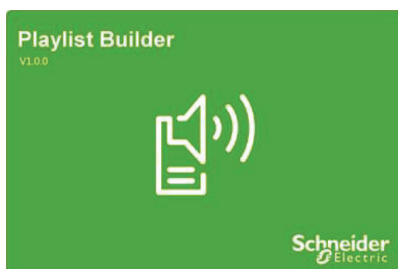
Products are to be connected:

- through cable-glands for using 6.5 mm/0.26 in. to 8.5 mm/0.33 in. cables (XVS10)
- through power wire c.s.a.: 0.52 mm²/AWG 20 and signal wire c.s.a.: 0.33 mm²/AWG 22, with flying leads, length 500 mm/19.6 in. (XVS14),
- through screw clamp terminals (XVS72 and XVS96).

For more technical information, please refer to our website www.schneider-electric.com.

Software configuration

- The "Playlist Builder" software is used to configure the audible signals of XVSV voice units,
- This software can be downloaded from www.schneider-electric.com for free of charge,
- It is compatible with Windows XP and Windows 7 (recommended) operating system,
- It allows configuration of audible signals to be set on 6 voice channels allowing to play 63 messages.



Playlist Builder configuration software window

Signaling Units

Sound units

Harmony type XVS

Multi sound sirens and alarms

PF141827A



XVS7BWN

PF141528A



XVS9BBN

PF141529A



XVSZ016

PF540816



XVS10M

PF56825



XVS14MW

PF56826



XVS72BM

PF56827



XVS96BM

XVSV editable voice alarms

Description	Voltage V	Color	Reference	Weight kg/lb
Editable alarms, DIN72	≡ 12-24	NPN, Black	XVSV7BBN	0.142/0.313
		NPN, White	XVSV7BWN	0.142/0.313
		PNP, Black	XVSV7BBP	0.142/0.313
Editable alarms, DIN96	≡ 12-24	NPN, Black	XVSV9BBN	0.268/0.591
		NPN, White	XVSV9BWN	0.268/0.591
		PNP, Black	XVSV9BBP	0.268/0.591
	~ 100-230	NPN, Black	XVSV9MBN	0.267/0.589
		NPN, White	XVSV9MWN	0.267/0.589
Wall mounting plate for DIN72 and DIN96			XVSVZ016 (1)	0.148/0.326

XVS10, XVS14, XVS72, XVS96 sirens and electronic alarms

Description	Voltage V	Color	Reference	Weight kg/lb	
Sirens 106 dB, 2 tones	≈ 12-24	White	XVS10BMW	0.800/1.764	
	~ 120	White	XVS10GMW	1.000/2.205	
	~ 230	White	XVS10MMW	1.000/2.205	
Multisound sirens 0 to 105 dB, 43 tones 8 channels Pre-wired	≡ 12/24	White	XVS14BMW	1.000/2.205	
	~ 120	White	XVS14GMW	1.200/2.646	
	~ 240	White	XVS14MMW	1.200/2.646	
Multisound alarms 0 to 90 dB, 16 tones Panel Mount DIN72 4 channels	≡ 12/24	PNP, Black	XVS72BMBP	0.180/0.397	
		PNP, White	XVS72BMWP	0.180/0.397	
	≈ 12/24	NPN, Black	XVS72BMBN	0.180/0.397	
		NPN, White	XVS72BMWN	0.180/0.397	
	Multisound alarms 0 to 96 dB, 16 tones Panel Mount DIN96 4 channels	≡ 12/24	PNP, Black	XVS96BMBP	0.400/0.882
			PNP, White	XVS96BMWP	0.400/0.882
≈ 12/24		NPN, Black	XVS96BMBN	0.400/0.882	
		NPN, White	XVS96BMWN	0.400/0.882	

(1) Optional

X	
XVSV7BBN	9
XVSV7BWN	9
XVSV7BBP	9
XVSV9BBN	9
XVSV9BWN	9
XVSV9BBP	9
XVSV9MBN	9
XVSV9MWN	9
XVSZ016	9
XVSZ084	9
XVSZ085	9
XVSZ090	9
XVSZ091	9
XVS10BMW	9
XVS10GMW	9
XVS10MMW	9
XVS14BMW	9
XVS14GMW	9
XVS14MMW	9
XVS72BMBP	9
XVS72BMWP	9
XVS72BMBN	9
XVS72BMWN	9
XVS96BMBP	9
XVS96BMWP	9
XVS96BMBN	9
XVS96BMWN	9

Life Is On



Authorized Partner



cedorlando.com
(407) 422-9841
marketing@cedorlando.com



Learn more about our products at
www.se.com

The information provided in this documentation contains general descriptions and/or technical characteristics of the performance of the products contained herein. This documentation is not intended as a substitute for and is not to be used for determining suitability or reliability of these products for specific user applications. It is the duty of any such user or integrator to perform the appropriate and complete risk analysis, evaluation and testing of the products with respect to the relevant specific application or use thereof. Neither Schneider Electric nor any of its affiliates or subsidiaries shall be responsible or liable for misuse of the information contained herein.

Design: Schneider Electric
Photos: Schneider Electric

Schneider Electric Industries SAS

Head Office
35, rue Joseph Monier - CS 30323
F-92500 Rueil-Malmaison Cedex
France

DIA5ED2130804EN
July 2021 - V3.0